

Name _____

Blizzard Bag 1 - THEORY

Write the scales with half notes ascending using accidentals (don't add key signatures).
Careful of clef signs.

EXAMPLE: G Major



2 "D" Major Scale

"Db" Major Scale



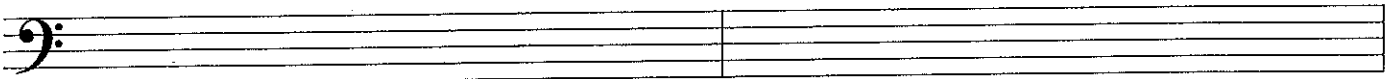
4 "B" Major Scale

"C # " Major Scale



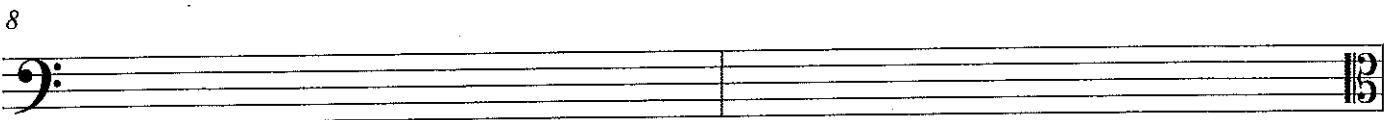
6 "A" Natural Minor Scale (also called an Aeolian Scale)

"A" Harmonic Minor Scale



"A" Melodic Minor Scale **Ascending**

"A" Melodic Minor Scale **Descending**



10 " C " Natural Minor Scale

" D " Harmonic Minor Scale



" Eb " Melodic Minor Scale **Ascending**

" Eb " Melodic Minor Scale **Descending**

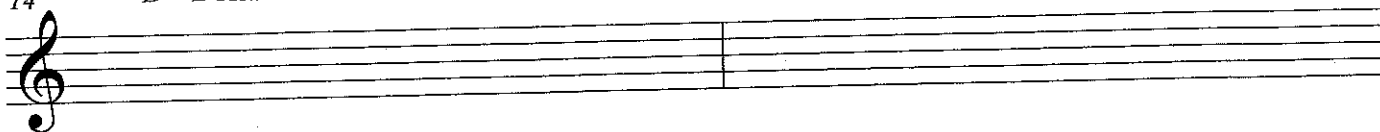


OVER

Blizzard Bag 1 - THEORY


(page 2)

14 "D" Dorian Scale "C" Dorian Scale



A musical staff in treble clef with a key signature of one flat (Bb). The staff is divided into two measures. The first measure is labeled "D" Dorian Scale and the second measure is labeled "C" Dorian Scale. The staff is currently empty.

16 "E" Phrygian Scale "Bb" Phrygian Scale




A musical staff in treble clef with a key signature of two flats (Bb, Eb). The staff is divided into two measures. The first measure is labeled "E" Phrygian Scale and the second measure is labeled "Bb" Phrygian Scale. The staff is currently empty.

18 "G" Lydian Scale "Db" Lydian Scale




A musical staff in bass clef with a key signature of one flat (Bb). The staff is divided into two measures. The first measure is labeled "G" Lydian Scale and the second measure is labeled "Db" Lydian Scale. The staff is currently empty.

20 "D" Mixolydian Scale "A b" Mixolydian Scale




A musical staff in bass clef with a key signature of one flat (Bb). The staff is divided into two measures. The first measure is labeled "D" Mixolydian Scale and the second measure is labeled "A b" Mixolydian Scale. The staff is currently empty.

22 "B" Locrian Scale "G#" Locrian Scale



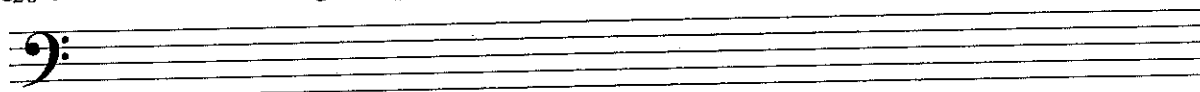
A musical staff in bass clef with a key signature of two sharps (F#, C#). The staff is divided into two measures. The first measure is labeled "B" Locrian Scale and the second measure is labeled "G#" Locrian Scale. The staff is currently empty.

24 "E" Whole Tone Scale "F" Whole Tone Scale



A musical staff in bass clef with a key signature of one flat (Bb). The staff is divided into two measures. The first measure is labeled "E" Whole Tone Scale and the second measure is labeled "F" Whole Tone Scale. The staff is currently empty.


"C" Chromatic Scale Using Sharps (Ascending)



A musical staff in bass clef with a key signature of one flat (Bb). The staff is currently empty.

"C" Chromatic Scale Using Flats (Descending)

27



A musical staff in bass clef with a key signature of one flat (Bb). The staff is currently empty.

Blizzard Bag 2 - THEORY

Name _____

1 2

Tonic Supertonic Mediant Subdominant Dominant Submediant Leading Tone Tonic

Circle each tonic scale degree in measures 3, 4, & 5.

Circle each mediant scale degree in measures 6, 7, & 8.

Circle each dominant scale degree in measures 9, 10, & 11.

In measures 12 - 19, circle each mediant and submediant.

OVER

Blizzard Bag 2 - THEORY

Circle each tonic, mediant, and dominant scale degree in measures 20 - 24.

Circle each leading tone in measures 25 - 28.

In measures 29 - 36, circle each supertonic scale degree.

Put a square around each tonic scale degree and a circle around each dominant scale degree for measures 37 - 44.

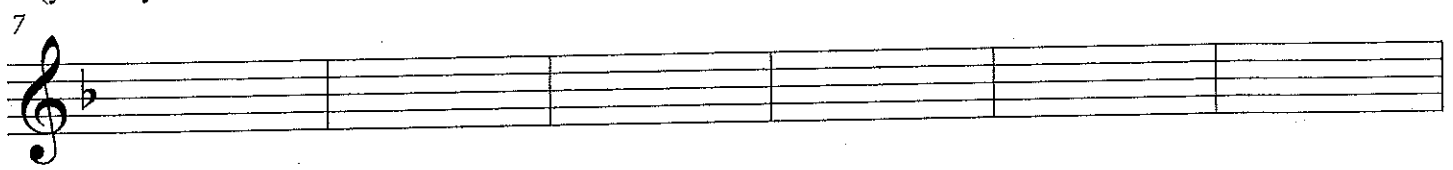
NAME _____

THEORY - Blizzard Bag 3

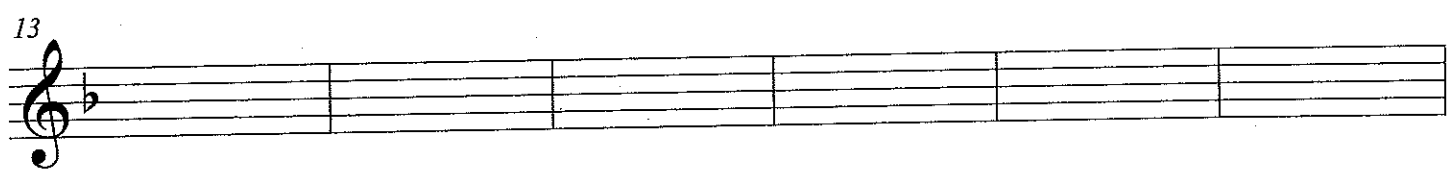
SUBJECT or THEME



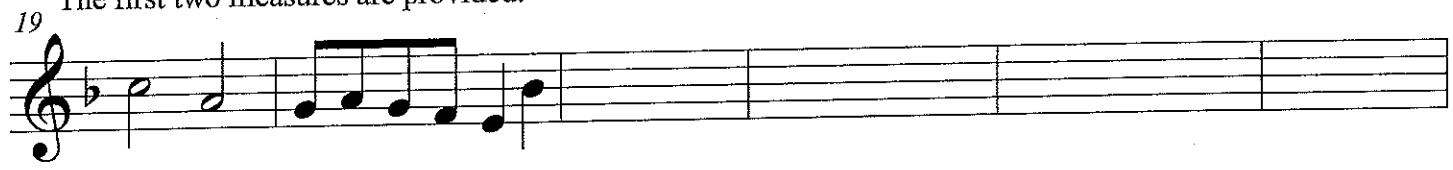
Write the subject in diminution (shrinking the note values to be heard more quickly)
(you may not need all the measures on this staff.)



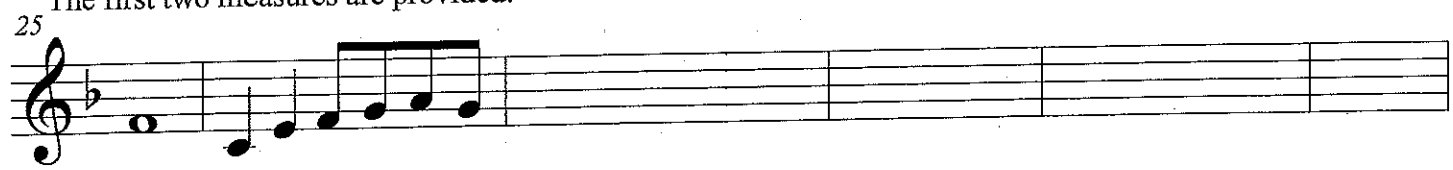
Write the first three measures of the subject in augmentation (stretching the notes for longer values).



Write the subject in inversion(intervals go the opposite direction).
The first two measures are provided.



Write the subject in retrograde (start at the end and go backwards).
The first two measures are provided.



Write the subject in retrograde-inversion. (backwards & upside down)
The first two measures are provided.

